



BYZ ENTERPRISES INC.

1843 – 32nd ST SW, Medicine Hat, Alberta, T1B 3N9 Ph: (403) 526-9172

CONSTRUCTION UPDATE

29 Sept 2022

MD of Pincher Creek – Hamlet of Beaver Mines Potable Water Distribution & Wastewater Collection

Please refer to the map below for projected sequencing and upcoming activities. BYZ has directly contacted any residence that will be affected in changes. For the safety of the public, please be cautious of moving equipment and refrain from walking within the construction work zone. HWY 774 will be down to a one-way traffic control which has been approved by Alberta Transportation. If you require assistance, please contact any of the below team members.

Evan Larnas, P.Eng
403-526-9172
Project Manager

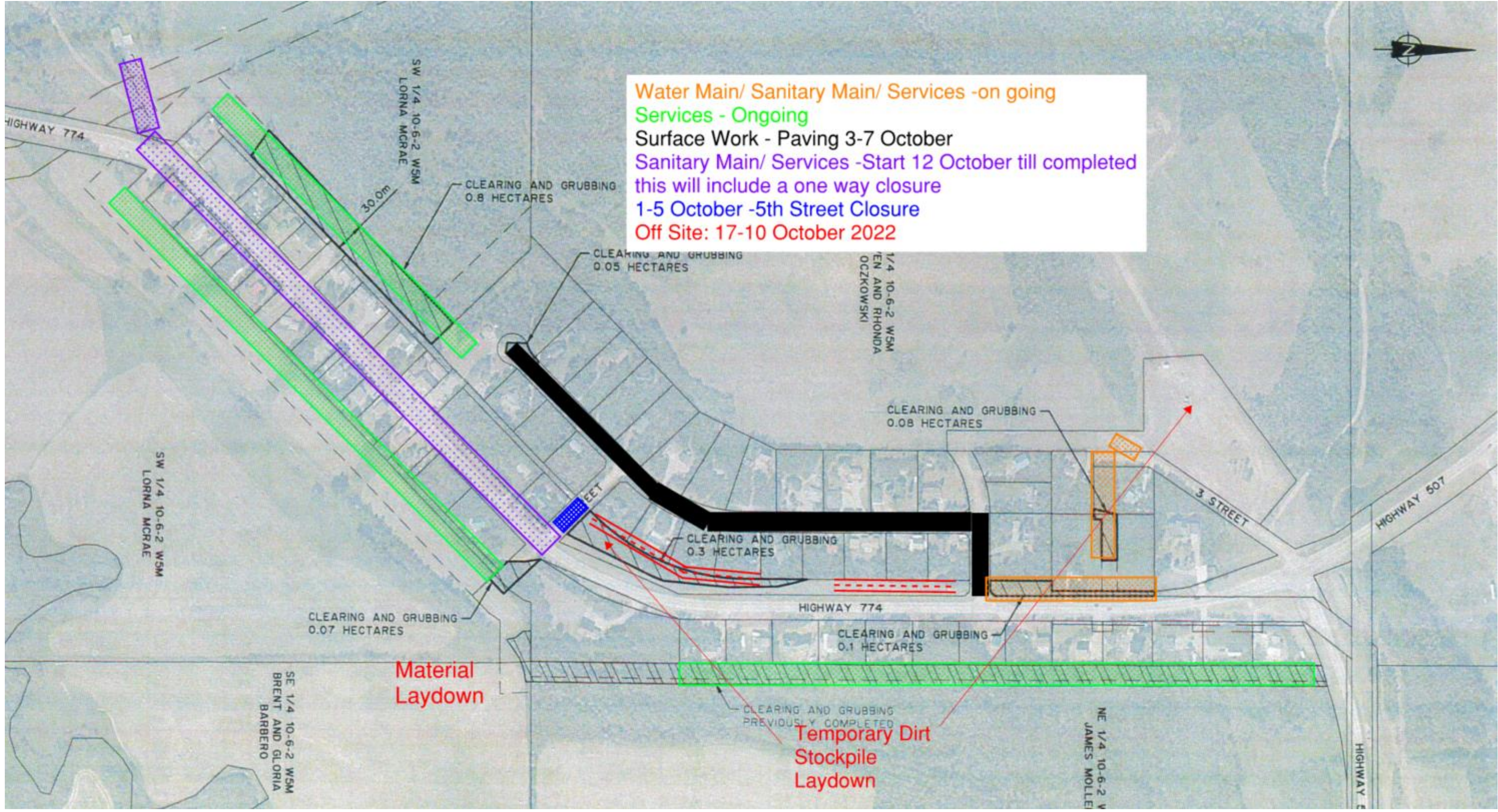
Tanis Bakalar
403-977-5858
Safety

Chris McIntyre
403.502.4426
Foreman

BYZ Enterprises Inc. wishes to thank you for your continued patience as we work to complete this important project in your community. Bi-weekly updates will be provided throughout the remainder of the project.



Water Main/ Sanitary Main/ Services -on going
Services - Ongoing
Surface Work - Paving 3-7 October
Sanitary Main/ Services -Start 12 October till completed
this will include a one way closure
1-5 October -5th Street Closure
Off Site: 17-10 October 2022



Material Laydown

Temporary Dirt Stockpile Laydown

CLEARING AND GRUBBING 0.8 HECTARES

CLEARING AND GRUBBING 0.05 HECTARES

CLEARING AND GRUBBING 0.08 HECTARES

CLEARING AND GRUBBING 0.3 HECTARES

CLEARING AND GRUBBING 0.07 HECTARES

CLEARING AND GRUBBING 0.1 HECTARES

CLEARING AND GRUBBING PREVIOUSLY COMPLETED

HIGHWAY 774

SW 1/4 10-6-2 WSM LORNA MCRAE

SW 1/4 10-6-2 WSM LORNA MCRAE

1/4 10-6-2 WSM TEN AND RHONDA OCZKOWSKI

3 STREET

HIGHWAY 507

SE 1/4 10-6-2 WSM BRENT AND GLORIA BARBERO

NE 1/4 10-6-2 WSM JAMES MOLLE

HIGHWAY 507

30.0m

HIGHWAY 774