



BYZ ENTERPRISES INC.

1843 – 32nd ST SW, Medicine Hat, Alberta, T1B 3N9 Ph: (403) 526-9172

CONSTRUCTION UPDATE

27 July 2022

MD of Pincher Creek – Hamlet of Beaver Mines Potable Water Distribution & Wastewater Collection

Please refer to the map below for projected sequencing and upcoming activities. BYZ has directly contacted any residence that will be affected in changes. For the safety of the public, please be cautious of moving equipment and refrain from walking within the construction work zone. We have marked in yellow the current pedestrian designated path. BYZ has provided an access road East of 2nd Ave residence.

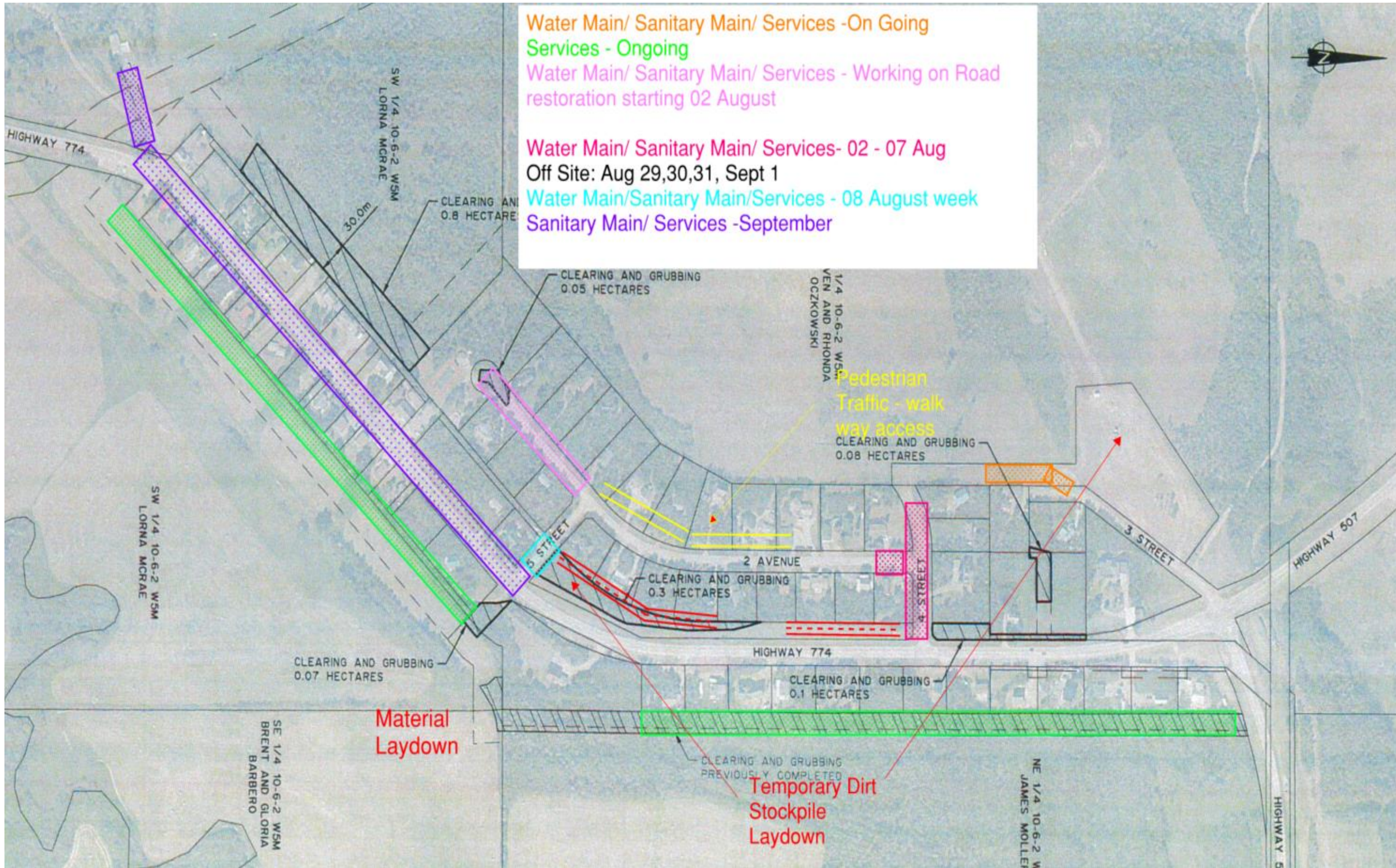
If you require assistance, please contact any of the below team members.

Evan Larnas, P.Eng
403-526-9172
Project Manager

Tanis Bakalar
403-977-5858
Safety

Chris McIntyre
403.502.4426
Foreman

BYZ Enterprises Inc. wishes to thank you for your continued patience as we work to complete this important project in your community. Bi-weekly updates will be provided throughout the remainder of the project.



Water Main/ Sanitary Main/ Services -On Going
 Services - Ongoing
 Water Main/ Sanitary Main/ Services - Working on Road restoration starting 02 August
 Water Main/ Sanitary Main/ Services- 02 - 07 Aug
 Off Site: Aug 29,30,31, Sept 1
 Water Main/Sanitary Main/Services - 08 August week
 Sanitary Main/ Services -September

Material Laydown

Temporary Dirt Stockpile Laydown

Pedestrian Traffic - walk way access

SW 1/4 10-6-2 WSM LORNA MCRAE

SW 1/4 10-6-2 WSM LORNA MCRAE

1/4 10-6-2 WSM VEN AND RHONDA OCZKOWSKI

SE 1/4 10-6-2 WSM BRENT AND GLORIA BARBERO

NE 1/4 10-6-2 W JAMES MOLLER

HIGHWAY 774

HIGHWAY 507

HIGHWAY 5



CLEARING AND GRUBBING 0.8 HECTARE

CLEARING AND GRUBBING 0.05 HECTARES

CLEARING AND GRUBBING 0.08 HECTARES

CLEARING AND GRUBBING 0.3 HECTARES

CLEARING AND GRUBBING 0.1 HECTARES

CLEARING AND GRUBBING PREVIOUSLY COMPLETED

CLEARING AND GRUBBING 0.07 HECTARES

30.0m

5 STREET

2 AVENUE

4 STREET

3 STREET

HIGHWAY 774