



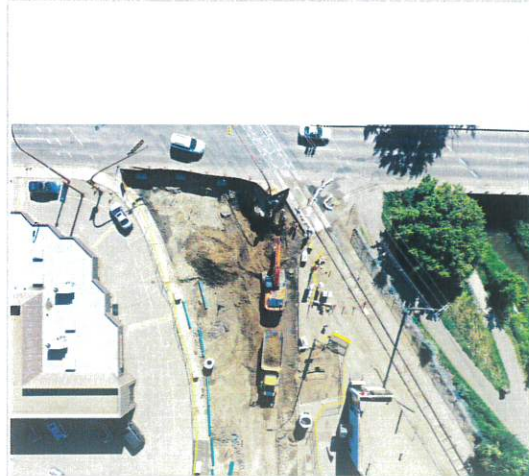
M.D. OF PINCHER CREEK NO. 9

BEAVER MINES LOT SERVICING CONTRACTOR "PRE-QUALIFICATION" FORM

Example Projects(maximum 3) Pictures can also be emailed as attachments or dropped off in person

Brief
Description
(25-100
words)

Kipling & Spencer St Corridor Rehabilitation - City of Medicine Hat- This project consisted of: Water Main, Sanitary Main, Storm Sewer Main, Concrete, Earthwork, remove and reinstall 4 outfall structures



Brief
Description
(25-100
words)

12 St SW and 17 St SW Water and Sanitary Main Replacement - COMH- Water Mains, Sanitary Sewer Mains, Storm Sewer Mains, manholes, catch basin, sanitary sewer bypass pumping





M.D. OF PINCHER CREEK NO. 9

BEAVER MINES LOT SERVICING CONTRACTOR "PRE-QUALIFICATION" FORM

Brief
Description
(25-100
words)

7 St NE & 5th St SW Water & Sewer Rehab COMH Watermain, Sanitary Main, Storm Sewer Main, Concrete, Earthworks Sanitary Bypass Pumping

