



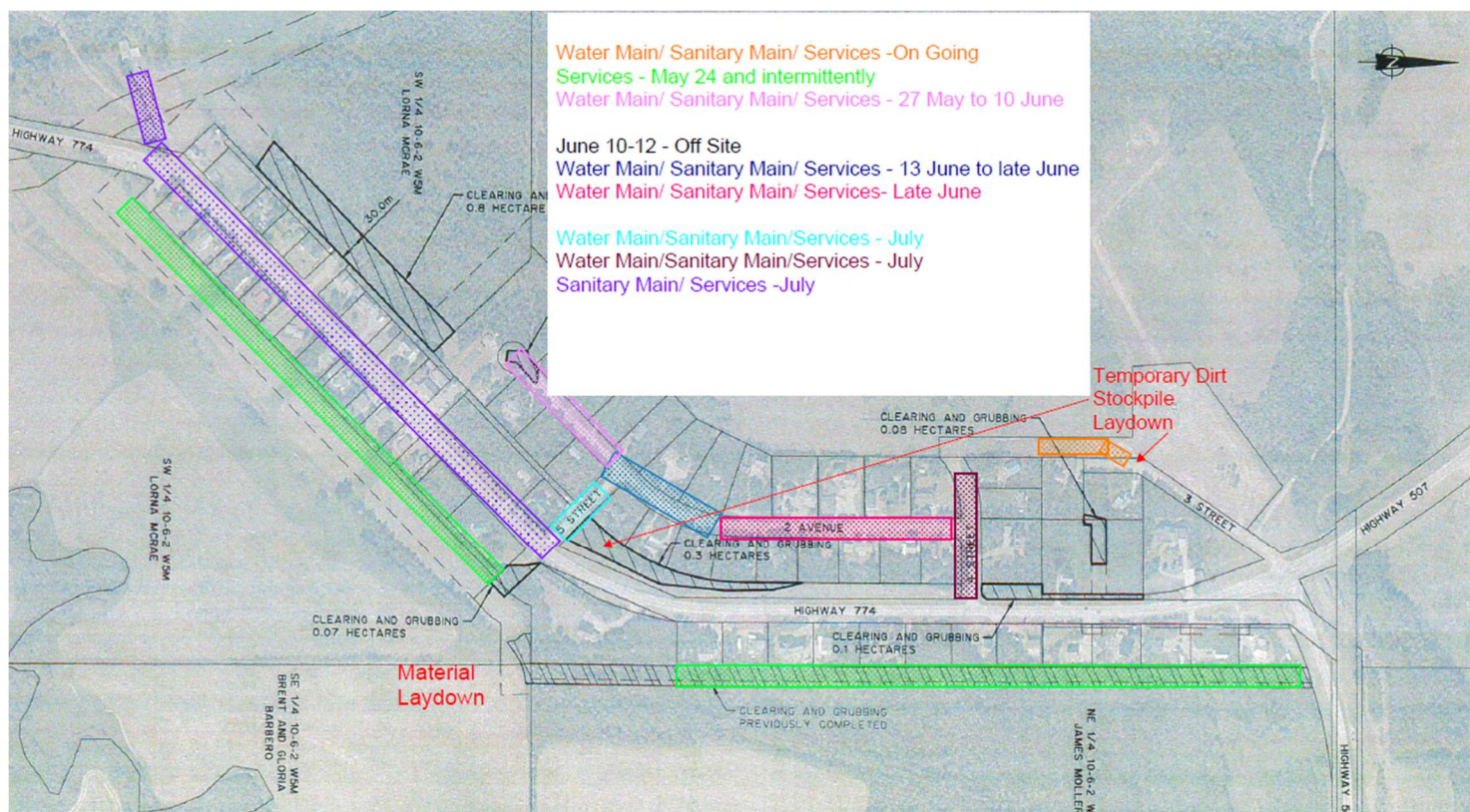
BYZ ENTERPRISES INC.
 1843 – 32nd ST SW, Medicine Hat, Alberta, T1B 3N9
 Ph: (403) 526-9172

CONSTRUCTION UPDATE

3 June 2022

MD of Pincher Creek – Hamlet of Beaver Mines Potable Water Distribution & Wastewater Collection

Please refer to the map below for projected sequencing and upcoming activities. Recent and forecast upcoming rain has caused the schedule to slide somewhat. As agreed, notices of any road closures which will impact access to properties will be distributed to affected residents one week in advance of the closure.



If you require further information or have any questions, please do not hesitate to contact one of our representatives:

Evan Laturnas, P.Eng
 403-526-9172
 Project Manager

Tanis Bakalar
 403-977-5858
 Safety

BYZ Enterprises Inc. wishes to thank you for your continued patience as we work to complete this important project in your community. Bi-weekly updates will be provided throughout the remainder of the project.