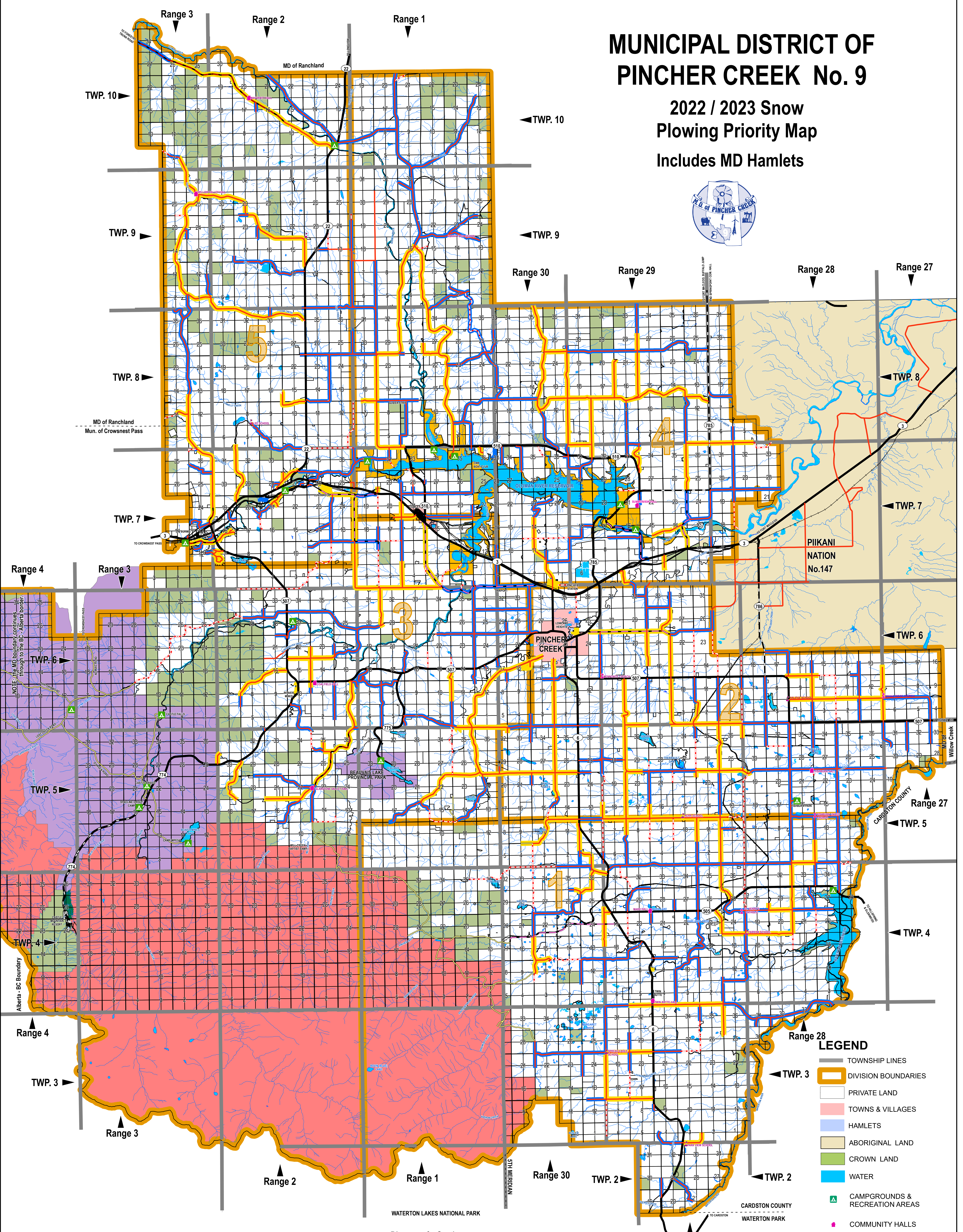
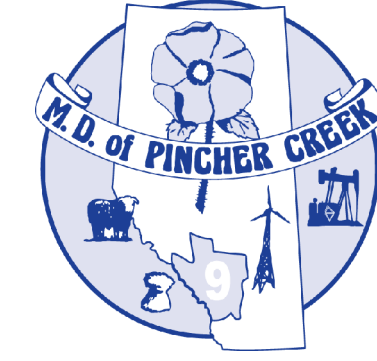


# MUNICIPAL DISTRICT OF PINCHER CREEK No. 9

## 2022 / 2023 Snow Plowing Priority Map

### Includes MD Hamlets



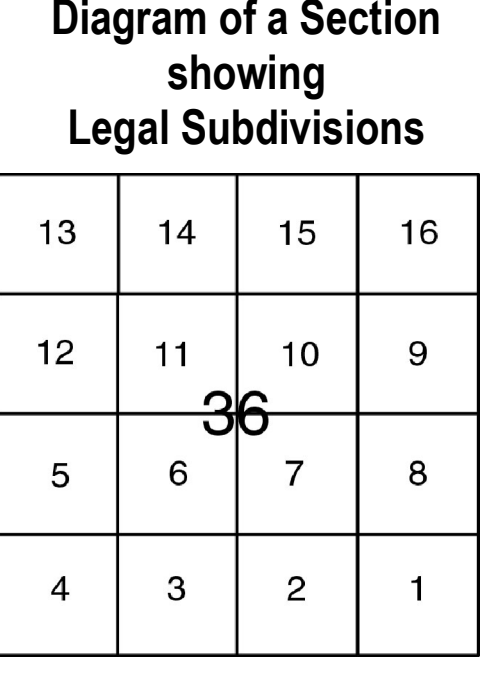
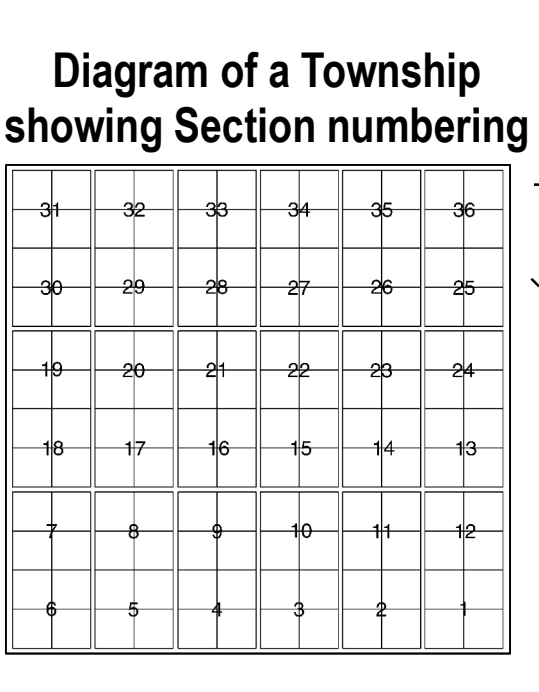
- #### LEGEND
- TOWNSHIP LINES
  - DIVISION BOUNDARIES
  - PRIVATE LAND
  - TOWNS & VILLAGES
  - HAMLETS
  - ABORIGINAL LAND
  - CROWN LAND
  - WATER
  - CAMPGROUNDS & RECREATION AREAS
  - COMMUNITY HALLS
  - FORMER SCHOOL SITES
  - CHURCHES

- #### Alberta Parks
- ECOLOGICAL RESERVE
  - PROVINCIAL PARK
  - PROVINCIAL REC AREA
  - WILDLAND PARK

- #### Road Plowing Priorities
- Priority 1
  - Priority 2

- #### Access
- PAVED - PRIMARY/SECONDARY
  - UNPAVED - PRIMARY/SECONDARY
  - LOCAL PAVED ROADS
  - OILED / GRAVEL ROADS
  - GRAVEL ROADS
  - UNIMPROVED ROADS
  - RAILROAD
  - PRIVATELY MAINTAINED

Scale: 1 : 100,000  
When printed on 28"x40" paper



Information depicted is subject to change, therefore the MD of Pincher Creek assumes no responsibility for discrepancies at time of use.  
Produced by the MD of Pincher Creek November 2022.  
ProjectFile: C:\GIS\WorkSpace\MADM\SnowPlowingMap\ProjectFiles\SnowPlowing2022\_XX.mxd