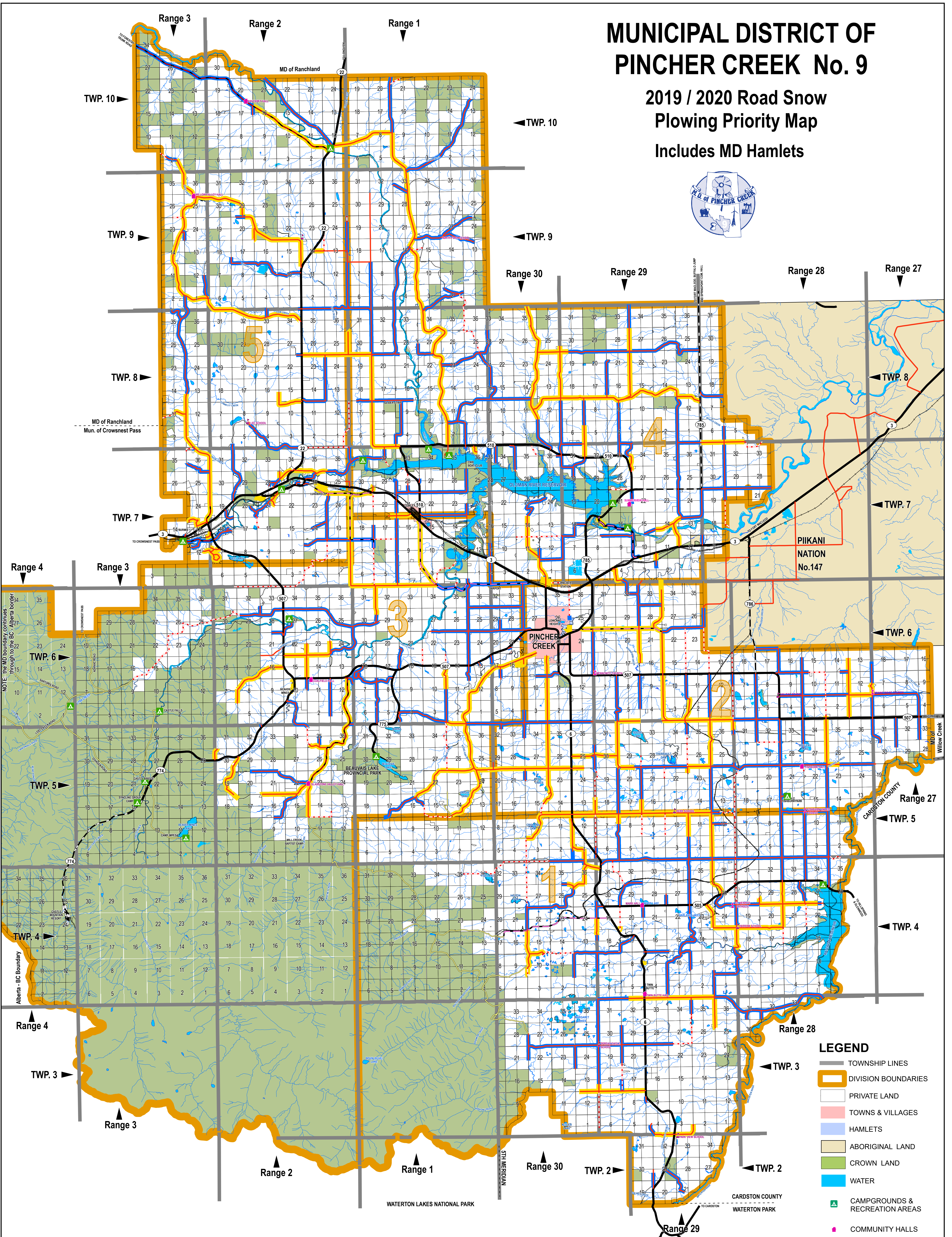
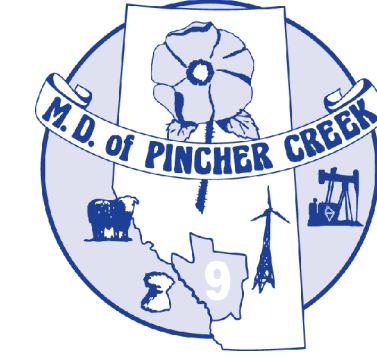


# MUNICIPAL DISTRICT OF PINCHER CREEK No. 9

2019 / 2020 Road Snow  
Plowing Priority Map  
Includes MD Hamlets

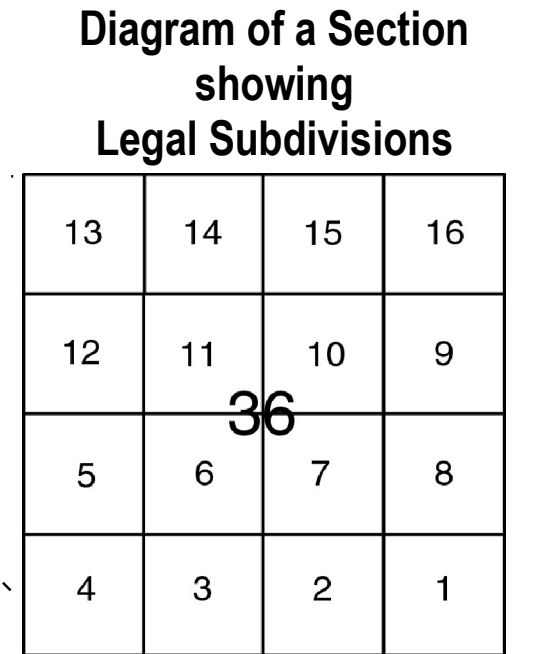
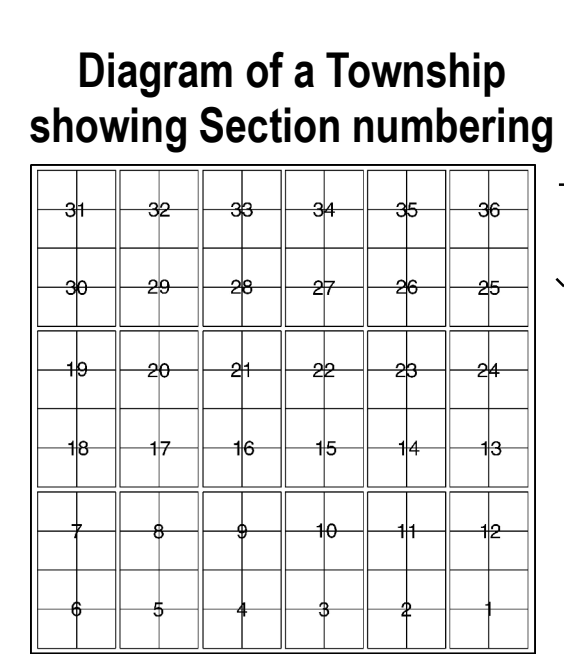


- LEGEND**
- TOWNSHIP LINES
  - DIVISION BOUNDARIES
  - PRIVATE LAND
  - TOWNS & VILLAGES
  - HAMLETS
  - ABORIGINAL LAND
  - CROWN LAND
  - WATER
  - ▲ CAMPGROUNDS & RECREATION AREAS
  - COMMUNITY HALLS
  - RESIDENCES\*\*
  - FORMER SCHOOL SITES
  - CHURCHES

- Road Plowing Priorities**
- Priority 1
  - Priority 2

- Access**
- PAVED - PRIMARY/SECONDARY
  - UNPAVED - PRIMARY/SECONDARY
  - LOCAL PAVED ROADS
  - OILED / GRAVEL ROADS
  - GRAVEL ROADS
  - UNIMPROVED ROADS
  - RAILROAD
  - PRIVATELY MAINTAINED

Scale: 1 : 100,000  
When printed on 28"x40" paper



Information depicted is subject to change, therefore the MD of Pincher Creek assumes no responsibility for discrepancies at time of use.  
Produced by the MD of Pincher Creek October 2019.  
Project File: C:\GIS\Workspace\MADM\SnowPlowingMap\ProjectFiles\SnowPlowing2019\_XX.mxd  
Plot File: C:\GIS\Workspace\MADM\SnowPlowingMap\PlotFiles\SnowPlowingMap2019\_XX.pg