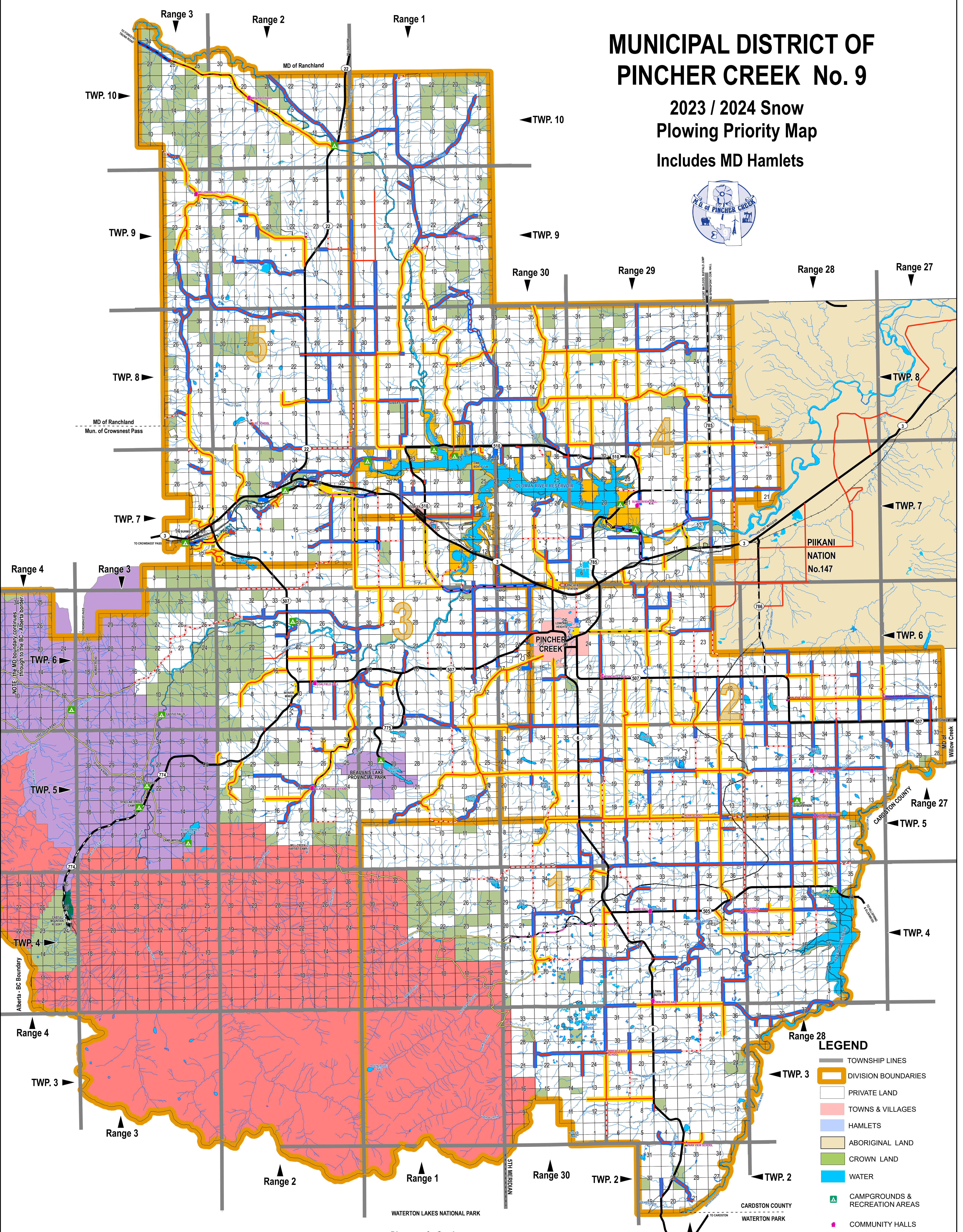
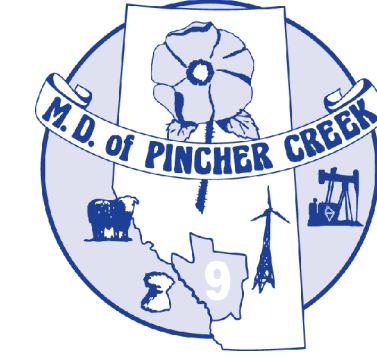


# MUNICIPAL DISTRICT OF PINCHER CREEK No. 9

2023 / 2024 Snow  
Plowing Priority Map  
Includes MD Hamlets



- LEGEND**
- TOWNSHIP LINES
  - DIVISION BOUNDARIES
  - PRIVATE LAND
  - TOWNS & VILLAGES
  - HAMLETS
  - ABORIGINAL LAND
  - CROWN LAND
  - WATER
  - CAMPGROUNDS & RECREATION AREAS
  - COMMUNITY HALLS
  - RESIDENCES\*\*
  - FORMER SCHOOL SITES
  - CHURCHES

- Alberta Parks**
- ECOLOGICAL RESERVE
  - PROVINCIAL PARK
  - PROVINCIAL REC AREA
  - WILDLAND PARK

**Road Plowing Priorities**

- Priority 1  
~419.4 kilometers (2023)  
~420.1 kilometers (2022)  
~387.4 kilometers (2021)
- Priority 2  
~586.0 kilometers (2023)  
~583.6 Kilometers (2022)  
~616.3 Kilometers (2021)

**Access**

- PAVED - PRIMARY/SECONDARY
- UNPAVED - PRIMARY/SECONDARY
- LOCAL PAVED ROADS
- OILED / GRAVEL ROADS
- GRAVEL ROADS
- UNIMPROVED ROADS
- RAILROAD
- PRIVATELY MAINTAINED

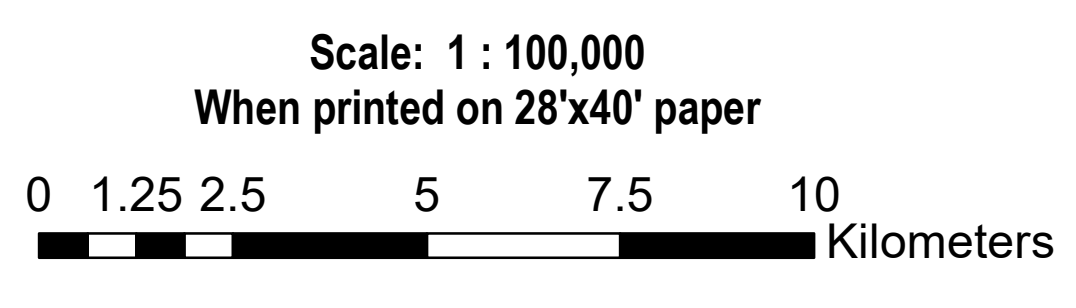


Diagram of a Township showing Section numbering

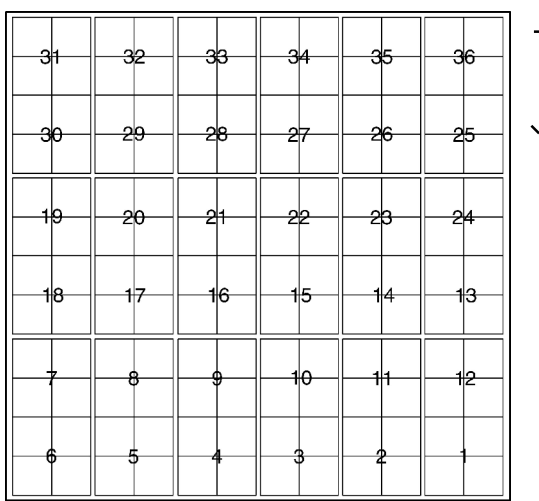
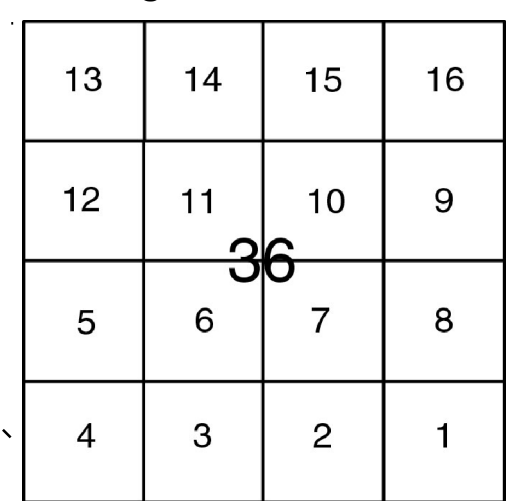


Diagram of a Section showing Legal Subdivisions



Information depicted is subject to change, therefore the MD Of Pincher Creek assumes no responsibility for discrepancies at time of use.  
Produced by the MD Of Pincher Creek October 2023.  
ProjectFile: C:\GIS\WorkSpace\MADM\SnowPlowingMap\ProjectFiles\SnowPlowing2023\_XX.mxd