

AGENDA
COUNCIL COMMITTEE MEETING
MUNICIPAL DISTRICT OF PINCHER CREEK
September 23, 2025
11:00 am
Council Chambers

- 1) Approval of Agenda
- 2) Delegation:
 - 11:00 am – 11:30 am Waterton Biosphere
- 3) Closed Session
 - a) Public Works Call Log – ATIA Sec. 29.1
 - b) ALUS Discussion – ATIA Sec. 30.1
 - c) Joint Funds Distribution Process Discussion – ATIA Sec. 29.1
 - d) Draft Policy C-CO-008 Public Art – ATIA Sec. 28.1
- 4) Rural Municipalities of Alberta Convention – November 17 through 20, 2025
 - Who is attending?
 - Meeting with RCMP?
- 5) Council Committees
 - Report from Administration dated September 17, 2025
- 6) Round Table
- 7) Adjournment

Waterton Biosphere Reserve Association Zonation Changes

Briefing Note for MD of Pincher Creek Council – September 23, 2025 meeting

In 2026, Waterton Biosphere Reserve Association will begin preparing documentation for our upcoming ten-year Periodic Review process that ensures we still meet the criteria for designation as a UNESCO Biosphere Reserve and are adequately addressing the complementary activities of biodiversity conservation, sustainable use of natural resources, and capacity building in local communities. Under the Man and the Biosphere program, every biosphere reserve/region also needs three interrelated zones known as the core area, the buffer zone, and a transition area or ‘area of cooperation.’

How are these zones applied to a Biosphere Region?

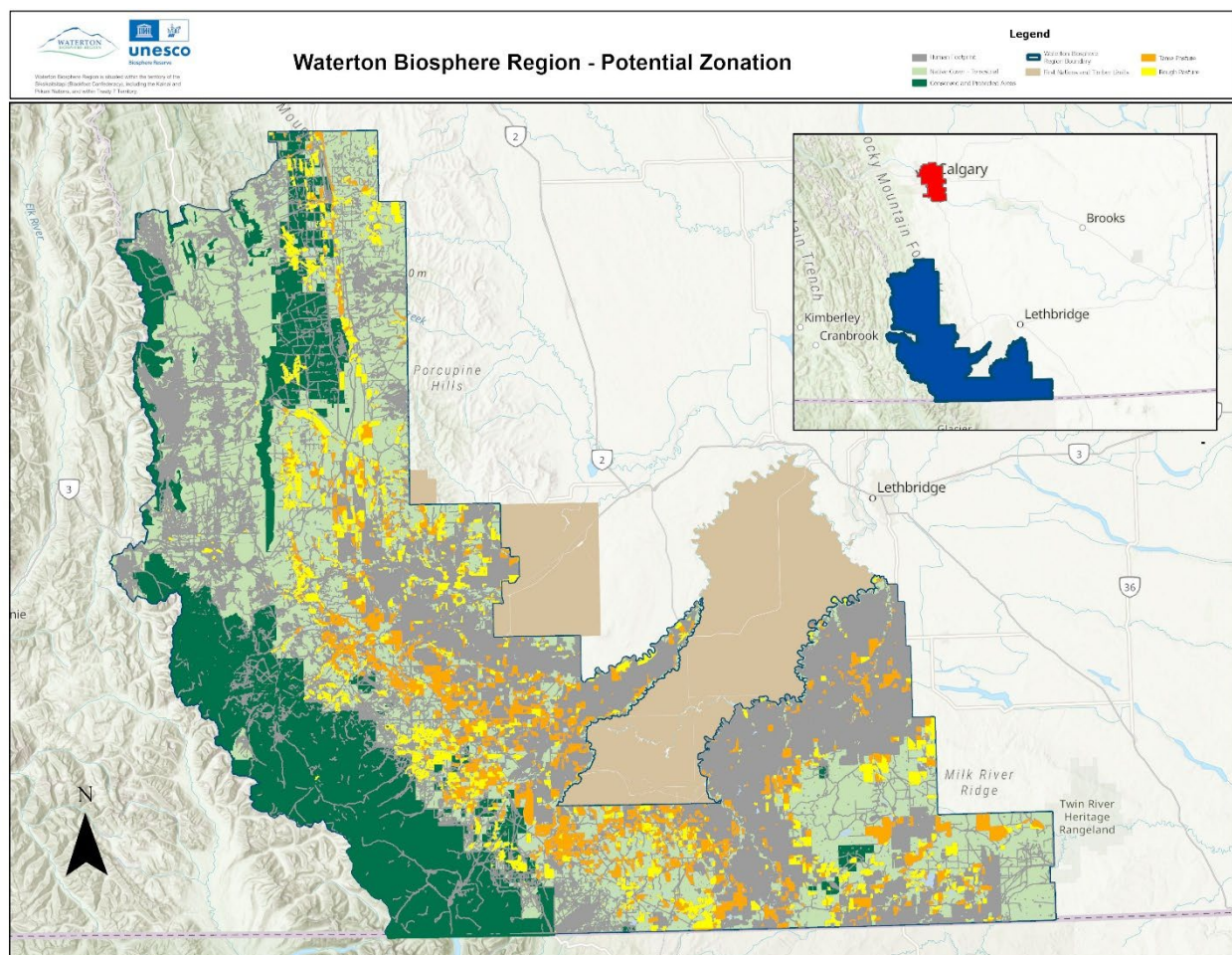
The zonation concept is designed to be flexible and may be used in a variety of ways to address local needs and conditions. Ownership arrangements in a biosphere reserve vary as well. The core areas of biosphere reserves are often public lands with legal protection, such as a previously designated national park, wilderness area, or wildlife refuge. However, the core area may be privately owned or belong to non-governmental organizations. The buffer zone surrounds or is contiguous to the core area. Activities in this zone do not hinder the conservation objectives of the core area but rather help to support it. The buffer zone might be an area for experimental research, or may involve ways to manage natural vegetation, agricultural land, forests, fisheries, or ranchland to enhance overall quality of production while conserving natural processes and biodiversity. This zone may also accommodate education, training, tourism, and recreation facilities. In many biosphere reserves, the buffer zone is regarded as an area in which human use is less intensive than what might be found in the transition area. Finally, the transition area, or area of cooperation, is the outer area of a biosphere reserve where people live and work, using the natural resources of the area in a sustainable manner. The term ‘area of cooperation’ underscores the role of cooperation as the main tool to achieve the objectives of the biosphere reserve. It is here that the local communities, conservation agencies, scientists, civil associations, cultural groups, businesses and other stakeholders agree to work together to manage and use the area in a sustainable way that will benefit the people who live there.

How might the approach to zonation in WBR change from the previous process?

The Periodic Review is our opportunity to submit any zonation changes (our previous zonation was identified in 2016 and drew heavily upon the NCC natural area boundaries). For example, we intend to officially include the MD of Ranchland in our zonation, as it has been included operationally for the past three years. We also wish to develop a more robust



methodology and criteria to define how zones are applied across Waterton Biosphere Region. An initial analysis examined Alberta Biodiversity Monitoring Institute data layers for land cover, native cover, wetlands, and human footprint/land use patterns that were not available at our last zonation assessment, as well as data from the Canadian Protected and Conserved Area Database. The resulting map below shows protected and conserved areas in dark green (includes NCC-owned lands), native vegetation in light green, tame and rough/cleared pasture in yellow and orange, and human footprint (includes cropland, cutblocks) in grey.



How can the MD of Pincher Creek contribute to the updated WBR zonation?

We would like input from municipal representatives on criteria for smoothing the interior boundary between buffer and transition zone and are proposing a half day workshop in 2026 for this purpose. Discussions are also underway with Government of Alberta on expanding the core area with the inclusion of Castle Provincial Park and Castle Wildland Park. Any input from MD of Pincher Creek on this possible expansion is also welcomed.

Administration Guidance Request



TITLE: Council Committees

PREPARED BY: Jessica McClelland

DATE: Sept 17, 2025

DEPARTMENT: Administration

**Department
Supervisor**

Date: September 23,
2025

ATTACHMENTS:

- List of current Council committees

APPROVALS:

Department Director

Date

CAO

Date

That in order to prepare for the Organizational Meeting in October, Council provides the following information:

- Any committees not listed
- Number of meetings for the committees
- Approximate time commitment for each committee

BACKGROUND:

At the meeting of September 9, 2025, there was some discussion on current committees and the number of meetings. To help the Council better understand the commitment time for each committee, administration has gathered the attached information and now seeks input from the Councillors on those committees.

FINANCIAL IMPLICATIONS:

Committee	Meeting Frequency	Approximate Time Commitment
<i>All of Council:</i>		
Coffee with Council	5 times a year	
Foothills Little Bow		
Joint Cowley and MD Council Meetings	less than once a year	
Joint Crowsnest Pass and MD Council Meetings	less than once a year	
Joint Funding Meetings	1 to 2 per year	
Municipal Planning Commission	monthly	
Regional Council Meetings	less than once a year	
Road Tours with Public Works Manager	less than once a year	
RMA (Rural Municipalities of Alberta)	2 weeks a year	
Regional Emergency Management Organization		
Subdivision Authority	monthly *as needed	
<i>Others:</i>		
Agricultural Service Board (ASB)	6 times a year	
ASB Appeal Committee	has never met	
Airport Committee	not currently active	
Alberta Southwest		
Alternative Land Use System Partnership Advisory Committee (ALUS)		
Beaver Mines Community & Castle Mountain Community	monthly	
Chinook Arch Regional & Pincher Creek Library Board	monthly	
Crowsnest Pincher Creek Landfill Association	monthly	
Emergency Advisory Committee (EAC)		
Family and Community Support Services (FCSS)		
Healthcare Committee		
Intermunicipal Collaboration Framework (ICF)	as needed	
Intermunicipal Development Plan (IDP)	as needed	
a) Town of Pincher Creek		
b) Municipality Crowsnest Pass		
c) MD of Ranchlands		
d) MD of Willow Creek		
e) Cardston County		
Joint Council Grant Sub Committee	not currently active	
Lundbreck Citizens Council	monthly	
Municipal Energy Committee		
Municipal Scholarship Committee	as needed	

Oldman River Regional Services Commission (ORRSC)	monthly	
Pincher Creek Foundation	monthly	
Pincher Creek Emergency Services Commission	monthly	
Police Advisory Committee		
Soil Conservation Act Appeal Committee	has never met	
Town of Pincher Creek Housing Committee		
Waterton Biosphere		