



M.D. OF PINCHER CREEK NO. 9

BEAVER MINES LOT SERVICING CONTRACTOR "PRE-QUALIFICATION" FORM

Example Projects(maximum 3) Pictures can also be emailed as attachments or dropped off in person

Brief
Description
(25-100
words)

Example #1 - Westerra has extensive experience with residential new builds joining water, sanitary and storm utilities to existing mains. We work for home owners, general contractors, developers and municipal district of Crowsnest Pass and Village of Cowley as of this season. Looking forward to working with the MD of Pincher Creek.

IMG - 7012

IMG - 7014

Brief
Description
(25-100
words)

Example #2 - Trenching, laying pipe and tying into septic line before tank. Long runs at grade minimums with proper equipment, technique and proper (safe) trenching technique. Obstacles such as gas lines in trench on far end. Trench dug at grade and then bedding laid at proper grade. Many similarities to Beaver Mines project.

IMG - 0265

IMG - 0267



M.D. OF PINCHER CREEK NO. 9

BEAVER MINES LOT SERVICING CONTRACTOR "PRE-QUALIFICATION" FORM

Brief
Description
(25-100
words)

Example #3 - Westerra has been involved in many commercial, industrial and residential projects. We are on the pre-approved list with the MD of Crowsnest Pass and have done utility work for them and have used the utility manager as a reference. Westerra Earthworks Ltd. is also doing utility work for the Village of Cowley and have been awarded one sanitary mainline replacement this fall.

IMG - 8205
IMG - 8214

Example # 1

Image 1

TMG 7012



Example # 1

Image 2

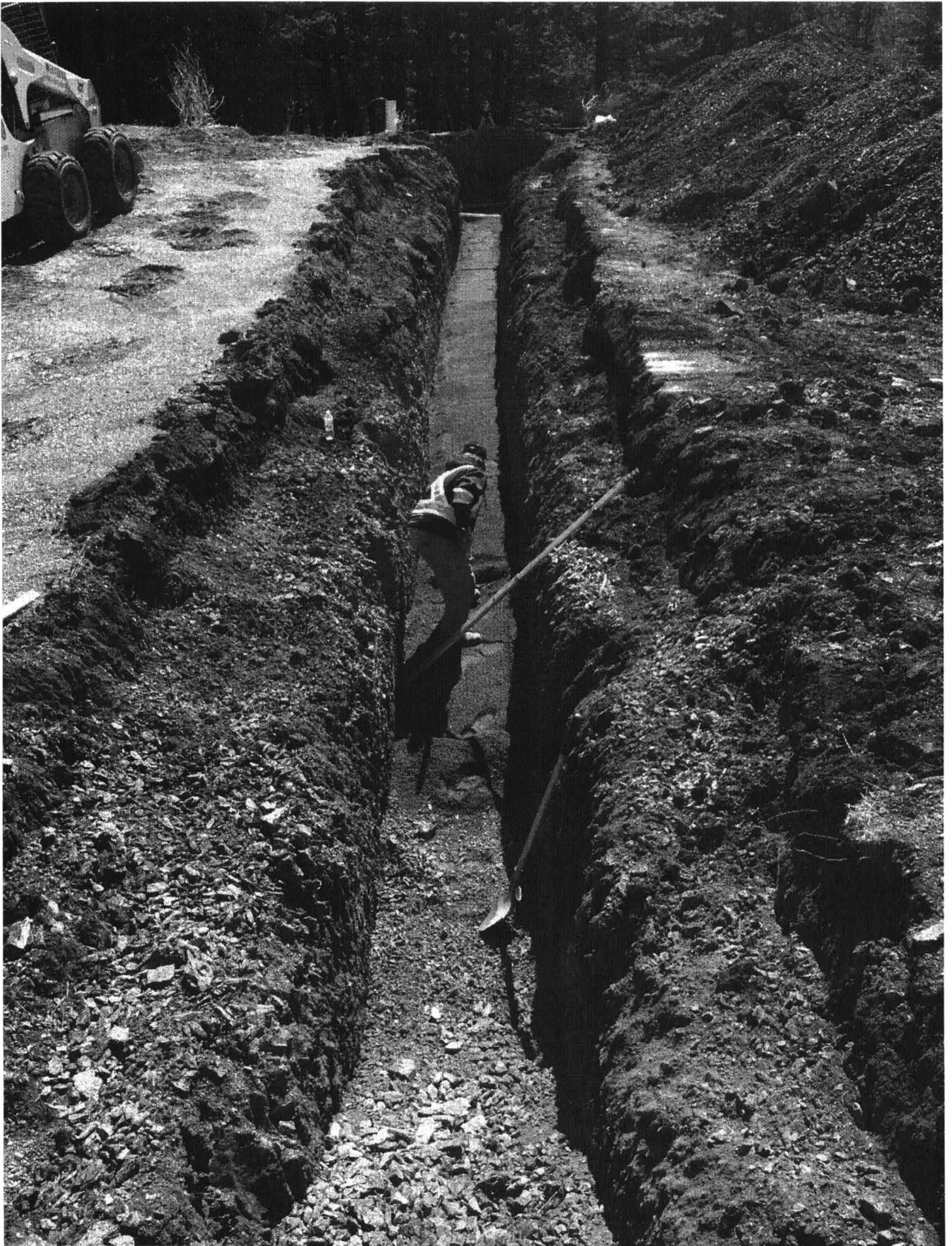
IMG 7014



Example #2

Image # 1

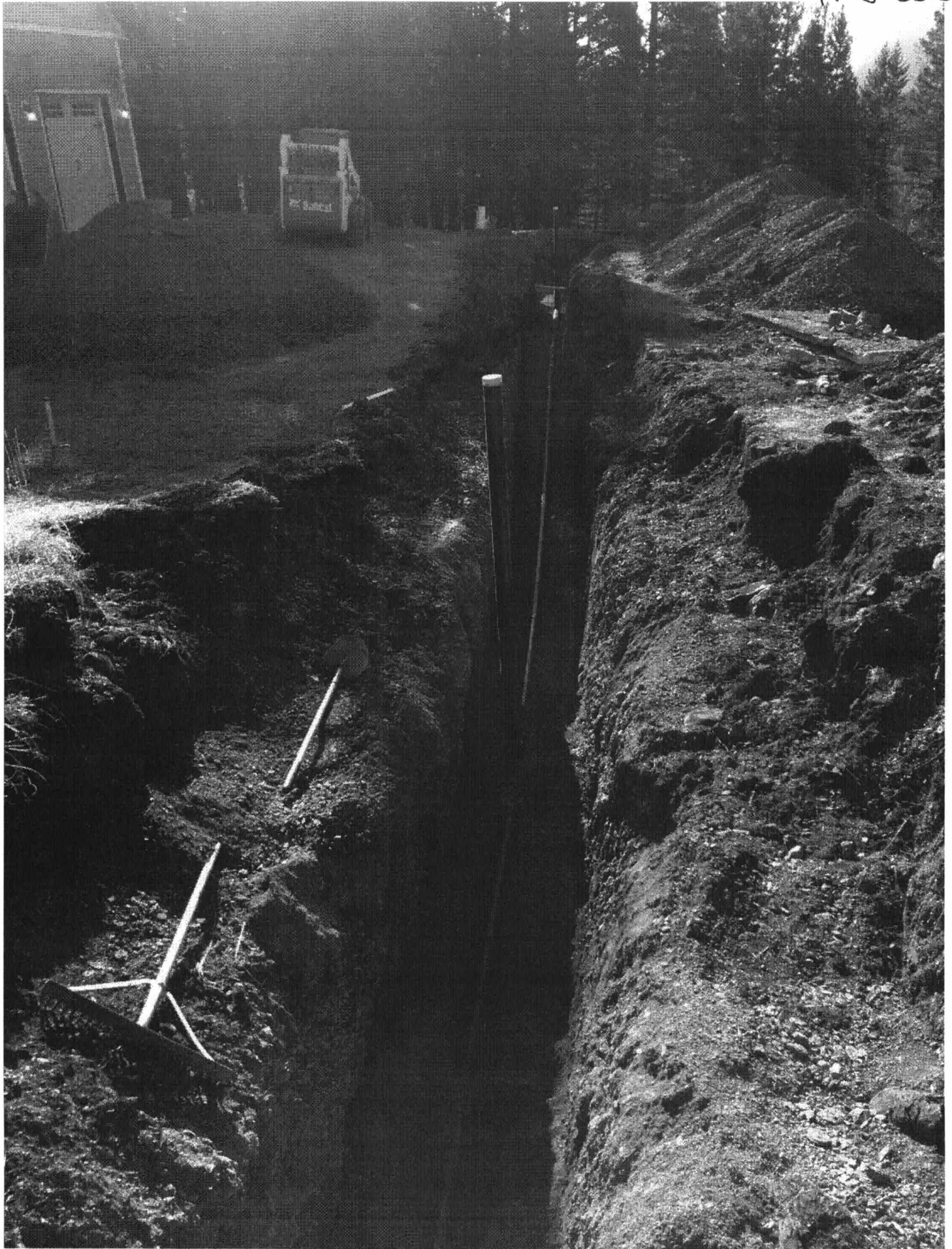
JMF 0265



Example #2

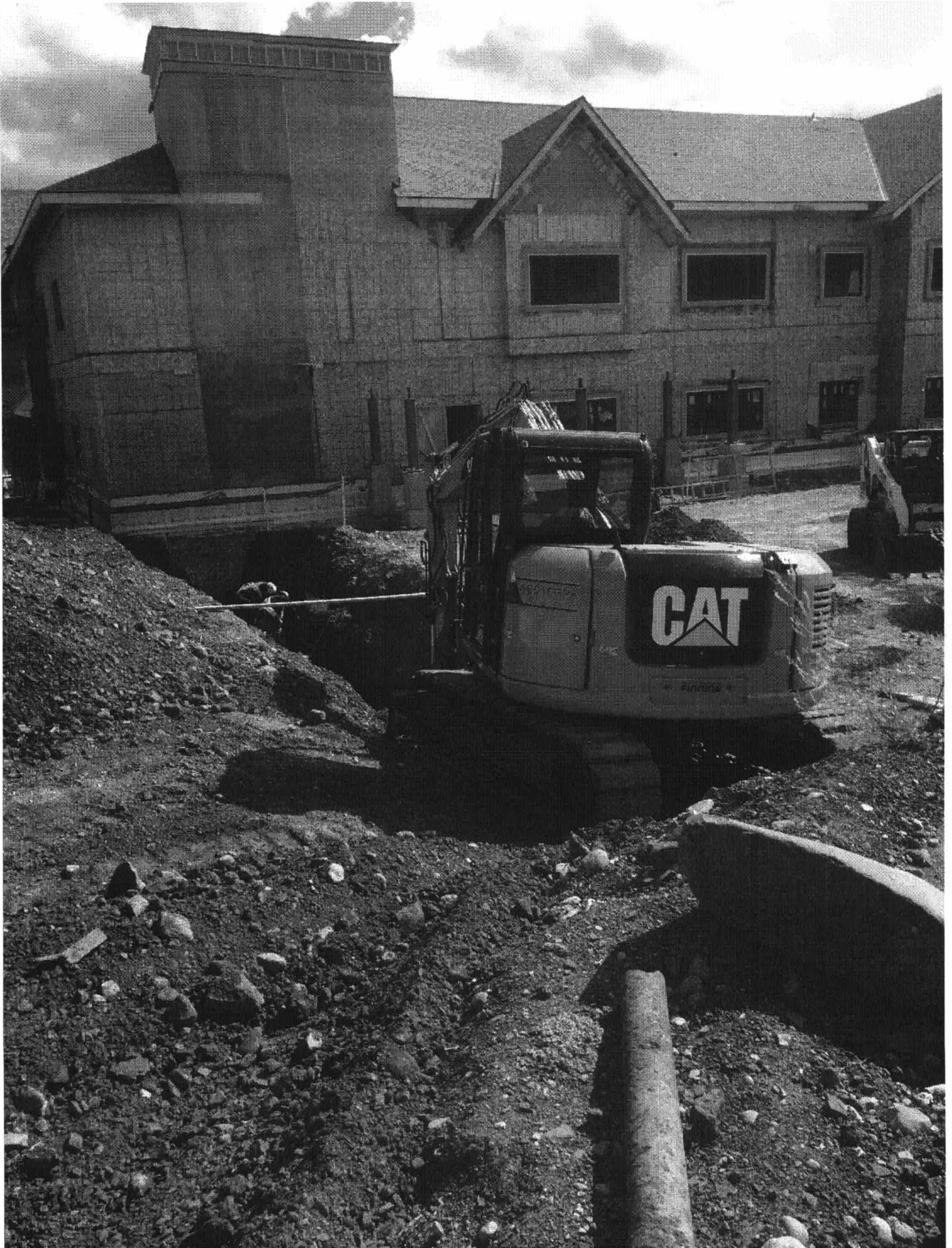
Image #2

IMG 0267



Example #3 Image #1

JMS 8205



Example #3

Image #2

Img # 8214

